

DX2(-SB)(-SS) SERIES

RE-VERBER-RAY
by Detroit Radiant Products Company

INFRARED RADIANT HEATERS

RUGGED STAINLESS STEEL DX2 SERIES GAS-FIRED INFRARED HEATERS

Choose optional stainless upgrades (-SB)
or 100% product upgrade features (-SS)

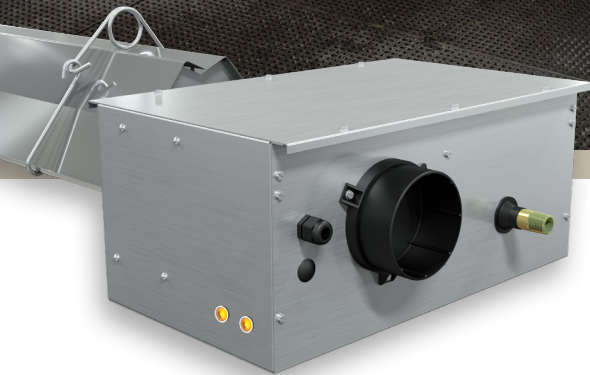
The energy-saving qualities of infrared heating can be applied in many wet, contaminated or harsh environments with the -SS Series of stainless steel low intensity tube heaters from Re-Verber-Ray®. Constructed of 304 and 409 grade stainless steels, the -SS Series is also ideal for use in many outdoor applications.

BENEFITS OF HEATING WITH INFRARED

- Superior Comfort
- Indoor Air Quality
- Reduced Energy Consumption
- Flexibility
- Durability
- Radiant Efficiency

PRODUCT FEATURES

- For use in harsh, wet, contaminated and outdoor applications
- Raintight electrical attachments
- Reliable hot surface ignition
- PVC Coated stainless steel flexible gas connector
- 120 volt power cord standard
- Optional 24 volt control add-on
- Operational indicator lights
- Components totally enclosed in a moisture resistant silicone sealed control housing



DX2(-SB)(-SS) SERIES

UPGRADES TO DX2 SERIES INFRARED HEATERS



PRODUCT SPECIFICATIONS



Input Range¹:
75,000 to 200,000 BTU/h



Certification:
CSA, IAS, Indoor, Outdoor with OD-Kit



Lengths¹:
20-ft. to 60-ft.



Limited Warranty:
3 (Components) - 5 (Tubes) - 10 (Burner)



Gas Type:
Natural (3.5" W.C.) or Propane (10.0" W.C.)



Electrical:
120V, 60 Hz., Optional 24VAO
Amps: 4.8 Starting, 1.1 Running
Raintight attachments

STAINLESS STEEL OPTIONS, FEATURES AND ALLOY TYPES²

FEATURE	BURNER	BUTT CLAMP	COMBUSTION TUBE	RADIANT TUBES	CONTROL BOX	HANGERS	GAS FLEX CONNECTOR	REFLECTOR	REFLECTOR SUPPORT	'U' OR 'L' FITTING
304 Series		X		X	X	X	X	X	X	X
409 Series			X							
430 Series	X									
Optional Add-on					HLRB					
Other			Black Coated	Black Coated	Silicone Sealed		PVC Coated	Polished w/ End Caps	One per 10-ft. Tube	Optional Accessory

¹Refer to the -SB Specification sheet for full product offering.

²Choose optional stainless upgrades (-SB) or 100% product upgrade features (-SS).

AVAILABLE DX2(-SB)(-SS) MODELS & CLEARANCES

MODEL # ³	GAS ⁴	BTU/h	LENGTH	WEIGHT	MOUNTING HEIGHTS ⁵	CLEARANCES TO COMBUSTIBLES ³	MOUNTING ANGLE			
							SIDE	TOP	BELOW	
DX2-20-75(-SB)(-SS)	Nat or Prop	75,000	21'-8"	145 lbs.	11' to 18'		0°	9"	6"	60"
DX2-30-75(-SB)(-SS)	Nat or Prop	75,000	31'-4"	195 lbs.	12' to 20'		0°	9"	6"	60"
DX2-30-80(-SB)(-SS)	Nat or Prop	80,000	31'-4"	195 lbs.	12' to 20'		0°	14"	6"	66"
DX2-30-100(-SB)(-SS)	Nat or Prop	100,000	31'-4"	195 lbs.	13' to 23'		0°	14"	6"	66"
DX2-40-75(-SB)(-SS)	Nat or Prop	75,000	41'-0"	235 lbs.	12' to 20'		0°	9"	6"	60"
DX2-40-80(-SB)(-SS)	Nat or Prop	80,000	41'-0"	235 lbs.	12' to 20'		0°	14"	6"	66"
DX2-40-100(-SB)(-SS)	Nat or Prop	100,000	41'-0"	235 lbs.	13' to 23'		0°	14"	6"	66"
DX2-40-125(-SB)(-SS)	Nat or Prop	125,000	41'-0"	235 lbs.	14' to 25'		0°	20"	6"	76"
DX2-40-150(-SB)(-SS)	Nat or Prop	150,000	41'-0"	235 lbs.	16' to 30'		0°	24"	6"	81"
DX2-50-100(-SB)(-SS)	Nat or Prop	100,000	50'-8"	290 lbs.	15' to 27'		0°	14"	6"	66"
DX2-50-125(-SB)(-SS)	Nat or Prop	125,000	50'-8"	290 lbs.	15' to 27'		0°	20"	6"	76"
DX2-50-150(-SB)(-SS)	Nat or Prop	150,000	50'-8"	290 lbs.	16' to 30'		0°	24"	6"	81"
DX2-50-175(-SB)(-SS)	Nat or Prop	175,000	50'-8"	290 lbs.	17' to 35'		0°	34"	6"	92"
DX2-50-200(-SB)(-SS)	Nat or Prop	200,000	50'-8"	290 lbs.	18' to 40'		0°	41"	6"	94"
DX2-60-125(-SB)(-SS)	Nat or Prop	125,000	60'-4"	330 lbs.	16' to 30'		0°	20"	6"	76"
DX2-60-150(-SB)(-SS)	Nat or Prop	150,000	60'-4"	330 lbs.	17' to 35'		0°	24"	6"	81"
DX2-60-175(-SB)(-SS)	Nat or Prop	175,000	60'-4"	330 lbs.	17' to 35'		0°	34"	6"	92"
DX2-60-200(-SB)(-SS)	Nat or Prop	200,000	60'-4"	330 lbs.	18' to 40'		0°	41"	6"	94"

³ Refer to the -SB Specification sheet for full product offering.

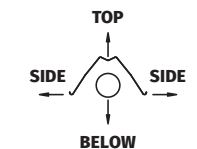
⁴ Specify natural (Nat) or propane (Prop) gas

⁵ Factory recommended mounting heights are provided as a guideline. Actual conditions may dictate variations from the above data.

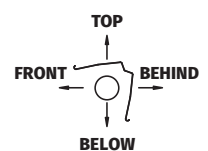
Always maintain the published clearances to combustibles. Not for residential use.

Clearances published in DX2 Series manual and on warning label supersede data shown on this brochure.

0° Mounting Angle



45° Mounting Angle⁶



⁶ Refer to DX2 Manual for additional information about clearances for 45° Mounting Angle, 0° w/ 1 Side Shield, 0° w/ 2 Side Shields, and 20 ft. from burner.



DETROIT RADIANT PRODUCTS COMPANY

21400 Hoover Road, Warren, Michigan 48089 USA
+1.586.756.0950 | sales@drp-co.com

www.REVERBERRY.com



Form No. LBDXSS_0M-0218 (DRPC)

